



Business Benefits

The impact indicator system developed in WP3 provides manufacturing enterprises, especially SMEs, with core benefits on the path towards future production systems:

- Overview of critical requirements and fields of action towards the Factory-of-the-Future
- Methodology to derive actions based on a qualitative self-assessment following the identified critical success factors
- Strategic controlling tool to evaluate the impact of actions towards the Factory-of-the-Future according to process-orientated and strategic performance measures

Follow us

Get detailed information on the impact indicator system and the project results on the BIFOCAIps homepage and follow us on:

 www.alpine-space.eu/bifocalps

 @bifocalps

 BIFOCAIps

 BIFOCAIps project



Contact

Dipl.-Ing. Arko Steinwender
E-mail: arko.steinwender@fraunhofer.at

Fraunhofer Austria Research GmbH
Theresianumgasse 27 | 1040 Vienna
Phone: +43 1 504 69 06
E-mail: office@fraunhofer.at
www.fraunhofer.at

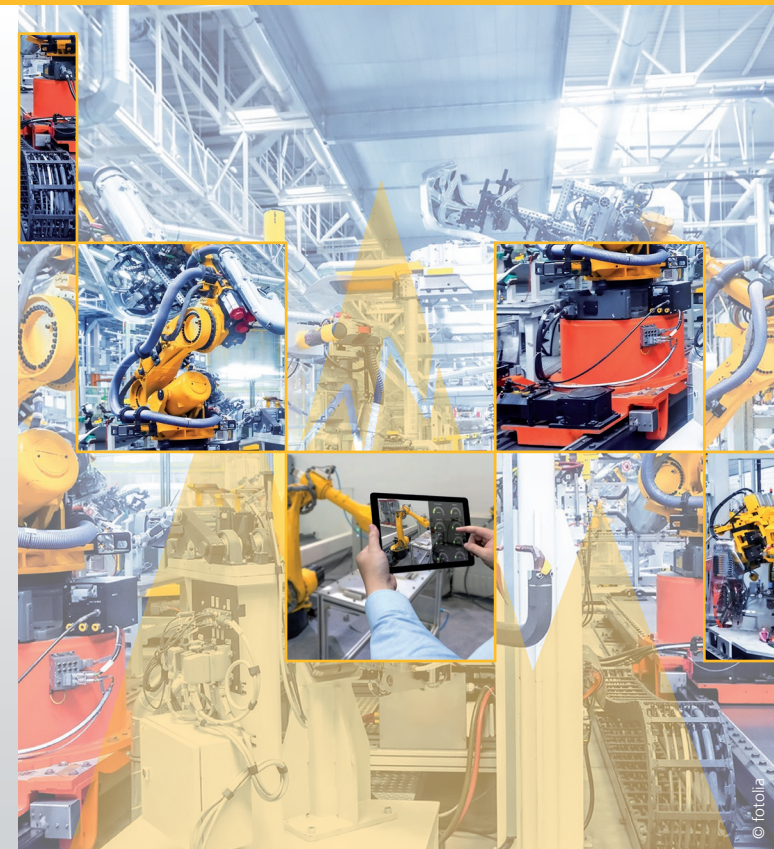
BIFOCAIps partners:



EUROPEAN UNION



www.alpine-space.eu/bifocalps

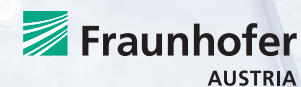


IMPACT INDICATOR SYSTEM

A strategic controlling tool to track the impact of technology and practices adoption on the path towards the Factory-of-the-Future



This project is co-financed by the European Regional Development Fund through the Interreg Alpine Space programme





WP3 – Fraunhofer Austria

The third work package of the BIFOCAlps project, led by Fraunhofer Austria, aims at developing and validating an impact indicator system to track effective improvements, in manufacturing enterprises, after the transfer and adoption of Factory-of-the-Future technologies and practices. The indicator system provides the opportunity to control the efficiency and effectiveness of actions, supporting companies on their path to future production systems.

Inputs – Critical Success Factors

In earlier stages of the BIFOCAlps project, more than 100 interviews were conducted in order to identify critical challenges. The findings have been summarized in a list of 5 critical success factors, each containing specific guidelines and recommendations for companies.

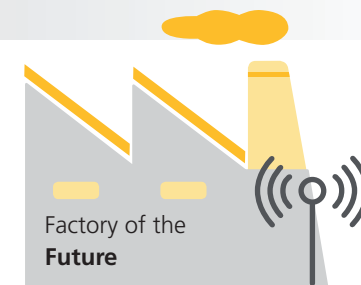
Impact Indicator System

The BIFOCAlps impact indicator system is based on the established IPOO-model. The framework integrates four elements: Inputs, Processing System, Outputs and Outcomes. It provides the opportunity to quantify the impacts of specific actions from different perspectives, starting from process level, up to the highest strategic level.

Necessary inputs to the indicator system are predefined by the set of the critical success factors, which summarize the requirements for the Factory-of-the-Future. The framework links these inputs to selected key performance indicators, enabling users to track the impacts of the adoption of technologies and practices, on multiple levels in the company.

The full methodology developed in WP3 comprises a set of application-oriented guidelines to integrate the framework in companies. These guidelines cover good practices regarding the adoption of the impact indicator system into the organizational structure as well as its correct application.

The BIFOCAlps Impact Indicator System



The BIFOCAlps project aims to boost collaboration and synergies among main actors of the Alpine Space innovation scene for a sustainable, smart and competitive development of the manufacturing value chain towards the Factory-of-the-Future.